



+61 2 4374 1655



info@mscmoto.com



www.mscmoto.com



STEERING DAMPER INSTALLATION INSTRUCTIONS

RM3 STEERING DAMPER FOR: HUSQVARNA 701 ENDURO / KTM 690 ENDURO R, GASGAS ES 700

We appreciate your support and hope you enjoy your ride more than ever after this installing our products!

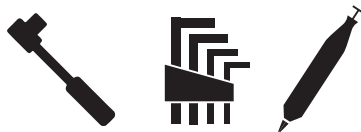
If you have any questions regarding the fitment or function of this product please call or message us 02 43741655 or info@mscmoto.com

MSC Products Australia does recommend this installation be completed by a competent mechanically minded person with the correct tools and equipment. Incorrect installation of after market parts to motorcycles can result in a product under performing, damaging the motorcycle or be harmful to the rider. Please take care when working on your motorcycle.

WHAT IS NEEDED FOR THIS INSTALLATION:

QUALITY TOOLS:

Socket Set or T Bar set, Allen Key set, Dremel with sanding bit



Tidy Work Area, Secure stand or work bench for motorcycle
Owners manual - Refer to owners manual for torque settings etc

RM3 DAMPER ADJUSTMENT DETAILS

20 clicks of adjustment on main dial;

Soft - Anti-clockwise ←

Hard - Clockwise →

It may take a few rides to work out your desired dampening depending on your style or conditions you ride in. Start your first ride with dials set in the middle, if you want more or less damping adjust the dial in the direction you need a few clicks at a time.

PLEASE NOTE:

Once dial has stopped clicking/turning, the damper has reached the end of adjustment range. Please do not attempt to turn the dial any more, doing this will damage the Damper.



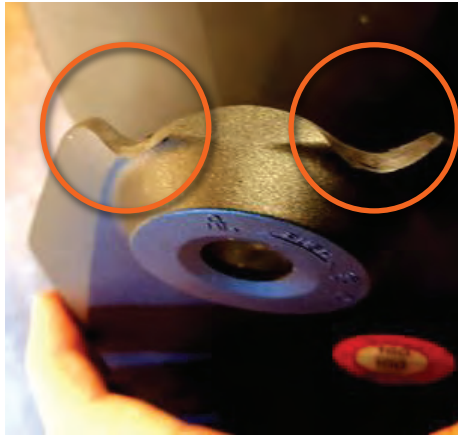
RM3 STEERING DAMPER FOR: HUSQVARNA 701 ENDURO / KTM 690 ENDURO R, GASGAS ES 700

MODIFICATION TO COVER

The only modification needed to fit the 701 Husqvarna is as per photos below. We use a sanding wheel on a small Dremel grinder for best results but this can be done many different ways in the home garage.



Grind small amounts and keep checking to see the fitment



Finished part should look like this



Fitment around post is neat and minimal material removal is needed.

HOW TO INSTALL:

Start with putting the bike on a secure stand and getting some containers to place the small screws you need to remove.

Pro Tip: We also recommend that you also take some photos to help remember where everything goes!

1.

Start with removing the handle bars from the clamps and lay them forward of the bar mounts. It is a good idea to place a cloth or towel over the instrument panel to prevent damage.

2.

Remove the seat and front ignition cover. See above for details on cover modification.

3.

Place the post lower clamp plate in under the top frame rails behind the ignition barrel. Sit the top clamp plate on top of the rails and over the ignition barrel. Use supplied screws to clamp in place.

4.

Now reinstall the modified plastic ignition cover in place and check it sits down neatly in place. Reinstall the seat also.

RM3 STEERING DAMPER FOR: HUSQVARNA 701 ENDURO / KTM 690 ENDURO R, GASGAS ES 700

HOW TO INSTALL:

5.

Place the damper mount plate onto the top triple clamp and place the lower bar clamps on top of the bracket. Tighten the bar clamps using supplied bolts to the factory torque setting.

6.

Install the RM3 steering damper unit onto the damper mount plate and secure in place using the 2 supplied M6 x 16mm stainless screws.

7.

Install the pin block and check the pin height and tighten in place with clearance between the under side of the steering damper housing and the pin top.

8.

Reinstall the handlebars to the clamps in your favored position.

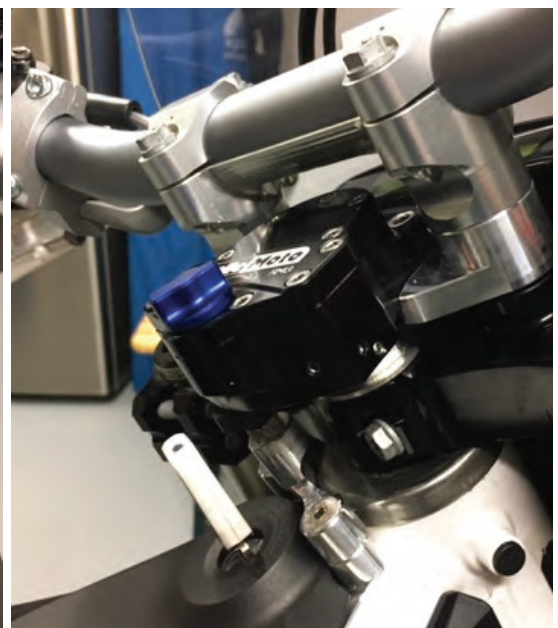
9.

Once you are satisfied the install is complete double check all fasteners are tight and that the handlebars move left to right smoothly without interference.

PLEASE NOTE:

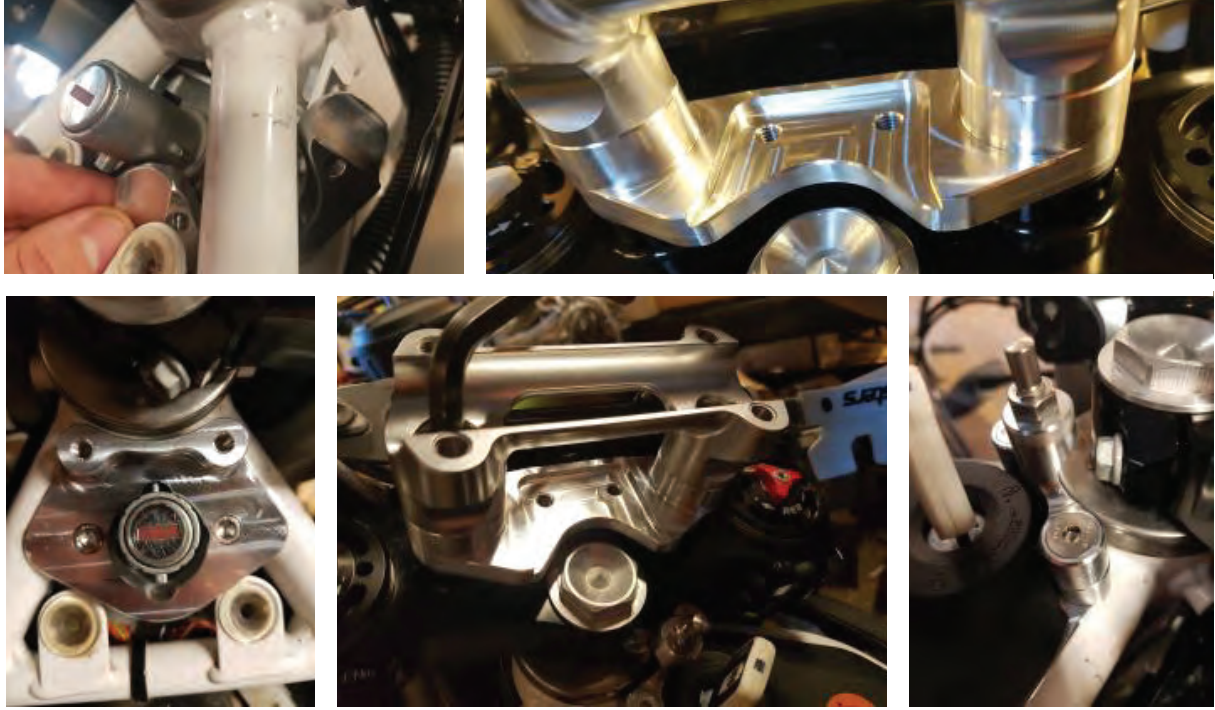
Please leave testing the steering damper to when you are riding as trying to simulate a desert race in the garage can end up damaging the unit.

Please see final page for further reference images.



RM3 STEERING DAMPER FOR: HUSQVARNA 701 ENDURO / KTM 690 ENDURO R, GASGAS ES 700

INSTALL REFERENCE IMAGES



WHAT YOUR STEERING DAMPER KIT CONTAINS

